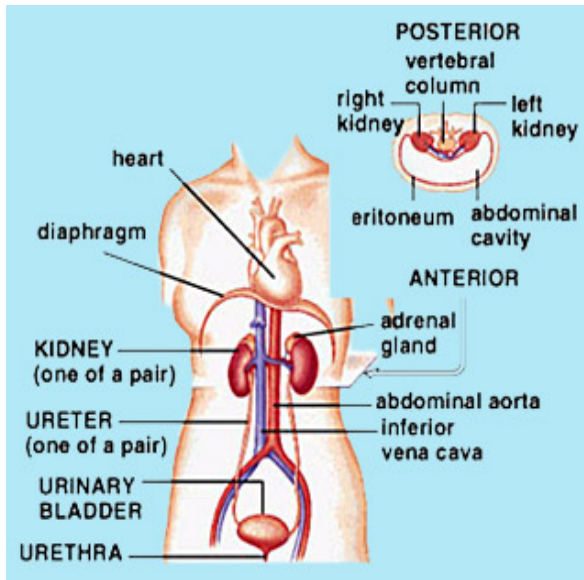


Excretory System

Main Function



The main function of the excretory system is to dispose of all poisons or fluids that could be harmful to your body. This includes expelling liquid waste from your body, which is filtered through your kidneys etc.

Different Organs in the System

- **Lungs:** Waste gases are carried by blood traveling through the veins to the lungs where respiration takes place.
- **Skin:** Dead cells and sweat are removed from the body through the skin which is part of the integumentary system.
- **Kidneys:** Liquid waste is removed from the body through the kidneys. Located beside the spine in your back within your ribcage, the kidneys are small (about 10 cm long) reddish-brown organs that are shaped like beans. During circulation, blood passes through the kidneys in order to deposit used and unwanted water, minerals, and a nitrogen-rich molecule called urea. The kidneys filter the wastes from the blood, forming a liquid called urine. The kidneys funnel the urine into the bladder along two separate tubes called ureters. The bladder stores the urine until muscular contractions force the urine out of the body through the urethra. Each day, your kidneys produce about 1.5 liters of urine. All of it needs to be removed from your system. This occurs through urination.

How Different Organs Work Together

Every organ in an organ system has a certain purpose it must fulfill so that everything in the system works perfectly. In our case the excretory system is the organ system that disposes of liquid waste (urine). It does this by the liquid/fluid in your stomach goes down through your kidneys which filters the liquid so it keeps the nutrients then lets the waste run down the ureter. From there it goes to the bladder until the bladder is full enough when you will have to dispose of the liquid waste through the urethra.

Other System Relations

- **Nervous System:** The excretory system relates with the nervous system because our brain receives a message that the bladder is full and it is time to go. The brain is the one to control urination.
- **Circulatory System:** The excretory system interacts with the circulatory system by getting rid of excess fluids and keep other fluids in check. It is the process of filtering the blood of waste. The blood circulates through our body goes through both kidneys. Urea, uric acid and water are no longer in our bodies.
- **Digestive System:** The digestive system and the excretory system work together. As the digestive system gets rid of the food, the body can no longer digest. The excretory system gets rid of substances from our blood stream and the result of this is urine.
- **Endocrine System:** The endocrine system is related because compounds and fluids and watched. The kidney is the provider for the internal environment for our cells.