

# Nerve System

## Cervical Nerve

Cervical Nerves are spinal nerves from the cervical vertebrae. There are seven cervical but 8 cervical nerves that merge with the thoracic nerves which lay directly under the cervical vertebrae.

## Thoracic Nerves

Thoracic nerves are also spinal nerves emerging from the thoracic vertebrae. Branches of the thoracic nerves exit the spine and go to the Automatic nervous system which effects heart rate, digestion, respiration rate and urination.

## Lumbar Nerves

Lumbar nerves are spinal nerves corresponding after the thoracic vertebrae. There are five spinal nerves that emerge from the lumbar vertebrae. The lumbar nerves run close to the medial branches and end in the Multifidus (a thin muscle deep in the spine).

## Proper Palmer Digital nerve

The Proper Palmer Digital nerve covers the median nerve that goes to the hand. The nerves divide into two branches. One supplies the pulp to the finger and the other goes around and beneath the nail. All proper digital nerves are placed corresponding to arteries.

## Median Nerve

Branches: Fore arm Muscular Branches, Palmer cutaneous, the median nerve extends down the arm starting from the shoulder down between all the arm muscles and bone all the way down to the hands. These branches cut off in the fingers. It is the only nerve that passes through the carpal tunnel (composed of bones and connective tissue).

## Musculocutaneous Nerve

Branches: Forearm at halfway down the arm. The Musculocutaneous nerves shares paths with median nerve in most of the trajectory. It does not branch at the hand like median, but it concentrates more on the biceps and muscles of that area in the arm (upper arms)

### Posterior Cutaneous Nerve

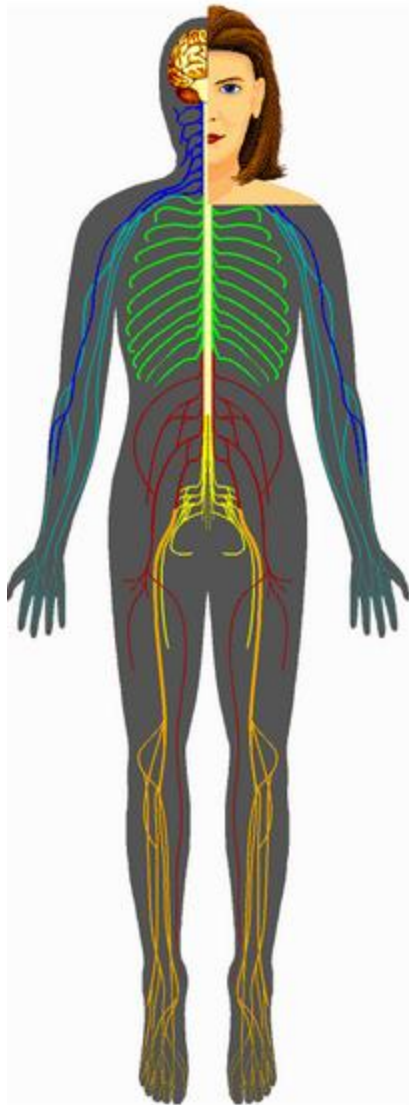
Nerve found across the human thighs, connecting the scrotum and anal areas, down the legs and descends all the way until it reaches halfway. Revolves around the upper legs and pelvis thought out, branching along the way.

### Saphenous nerve

Nerve sharing paths with posterior cutaneous nerve, except with having the biggest length, reaching and branching all the way to the calf and heel of the foot and some fingers

### Ulnar nerve

Largest unprotected nerve in the body. That is why we react easier when it is disturbed, often referenced as a funny bone, making us involuntary react to it sending us a message to the brain. It runs near the ulna bone. Directly connects to some of the fingers. It is found in structure between the bone and the skin, therefore being more exposed and more unprotected



From your knowledge and what you have learned from the test find where the nerve description should be. Answers at

<http://www.innerbody.com/image/nervov.html>.

